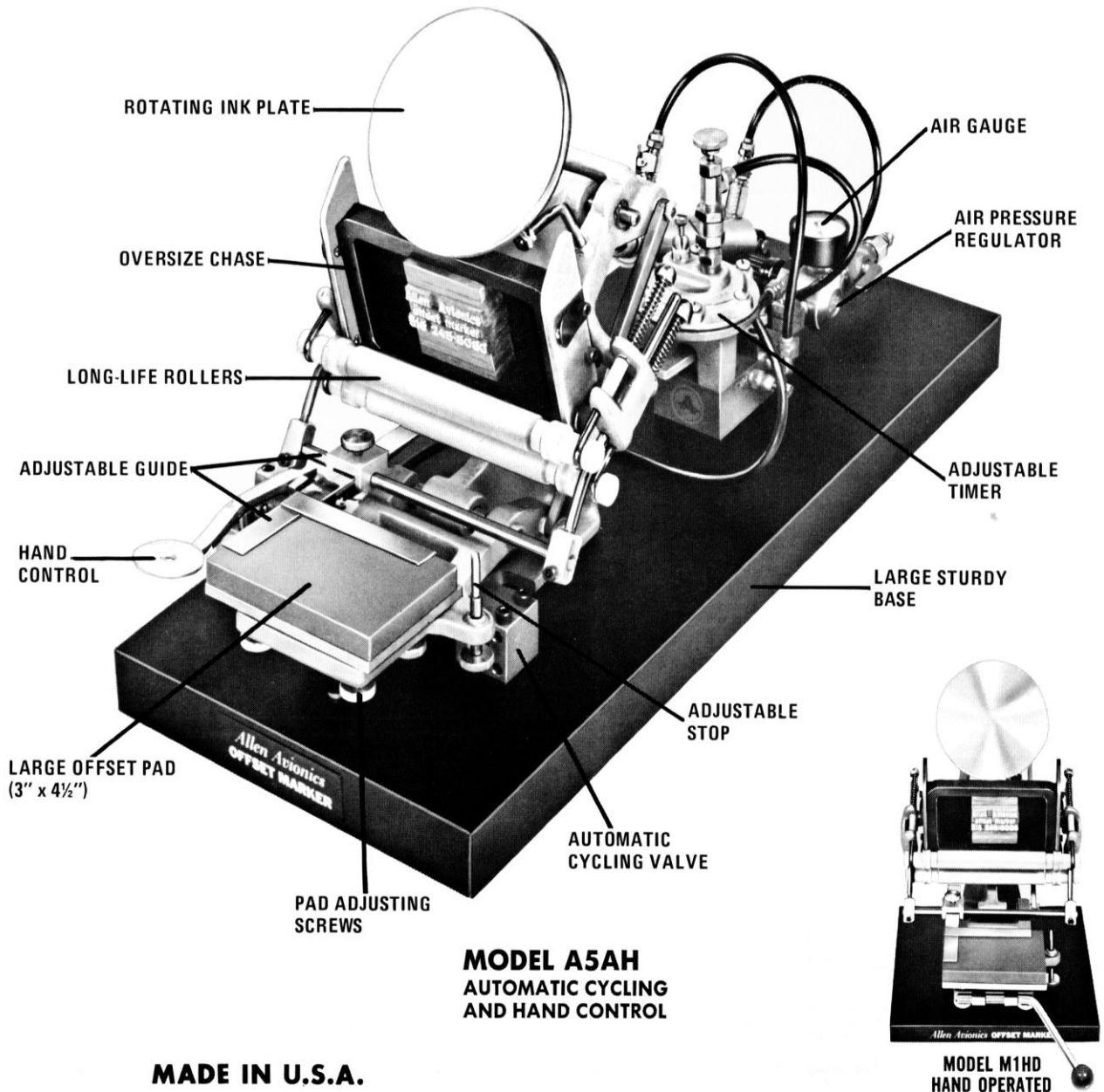


ALLEN AVIONICS

OFFSET MARKER

PRICE LIST

AN EXTREMELY VERSATILE & CONVENIENT
METHOD OF IDENTIFYING YOUR PRODUCTS



MADE IN U.S.A.

ALLEN AVIONICS, INC.

255 EAST SECOND ST MINEOLA, NY 11501 PH: 516-248-8080 FAX: 516-747-6724 www.allenavionics.com

OFFSET MARKER PRICE LIST

MODEL
NUMBER

M1HD	Hand Operated - (cannot be converted to air operation)	\$1200.00
A2HD	Air Operated. Hand Valve Controlled	2085.00
A3FT	Air Operated. Foot Valve Controlled	2140.00
A4AC	Air Operated. Automatic Cycling	2140.00
A5AH	Air Operated. Automatic Cycling & Hand Control .	2195.00
A6AF	Air Operated. Automatic Cycling & Foot Control	2249.00

ALL THE ABOVE MARKING MACHINES ARE SUPPLIED WITH 1 PAD, 1 LOCK, 1 CHASE , 1 WRENCH AND AN INSTRUCTION MANUAL. INK , CLEANER AND TYPE MUST BE PURCHASED SEPARATELY. SEE MARKING MACHINE ACCESSORIES.

OFFSET TYPE

Part No.	Description	Height Of TYPE	Height Of Body (C)	Type Specimen	Font Price
TYP0404	4 Pt. Condensed on 4 Pt.body	0.045	0.055	ABCDEF GHIJKLMNOPQRSTUVWXYZ 1234567890 # % . - , & () / \$? ! = ± Ω	\$350.00
TYP0606	6 Pt. Condensed on 6 Pt.body	0.061	0.083	ABCDEF GHIJKLMNOPQRSTUVWXYZ 1234567890 # % . - , & () / \$? ! = ± Ω	\$290.00
TYP0810	8 Pt. Normal on 8Pt.body	0.100	0.138	ABCDEF GHIJKLMNOPQRSTUVWXYZ 1234567890 # % . - , & () / \$? ! = ± Ω	\$275.00
TYP1010	10 Pt. CNormal on 10Pt.body	0.110	0.138	ABCDEF GHIJKLMNOPQRSTUVWXYZ 1234567890 # % . - , & () / \$? ! = ± Ω	\$275.00
TYP1414	14 Pt. Normal on 14 Pt.body	0.150	0.193	ABCDEF GHIJKLMNOPQRSTUVWXYZ 1234567890 # % . - , & () / \$? ! = ± Ω	\$275.00
TYP1818	18 Pt. Normal on 18 Pt.body	0.210	0.248	ABCDEF GHIJKLMNOPQRSTU V W XYZ 1234567890 # % . - , & () / \$? ! = ± Ω	\$390.00
TYP2424	24 Pt. Normal on 24 Pt.body	0.270	0.331	ABCDEF GHIJKLMNOPQRS TUVWXYZ1234567890 # % . - , & () / \$? ! = ± Ω	\$400.00

All of the above fonts consist of an assortment of capital letters, numbers, punctuation and spacers totaling over 670 pieces. All characters are cast in a hard lead alloy. Each font is packaged with the following characters:

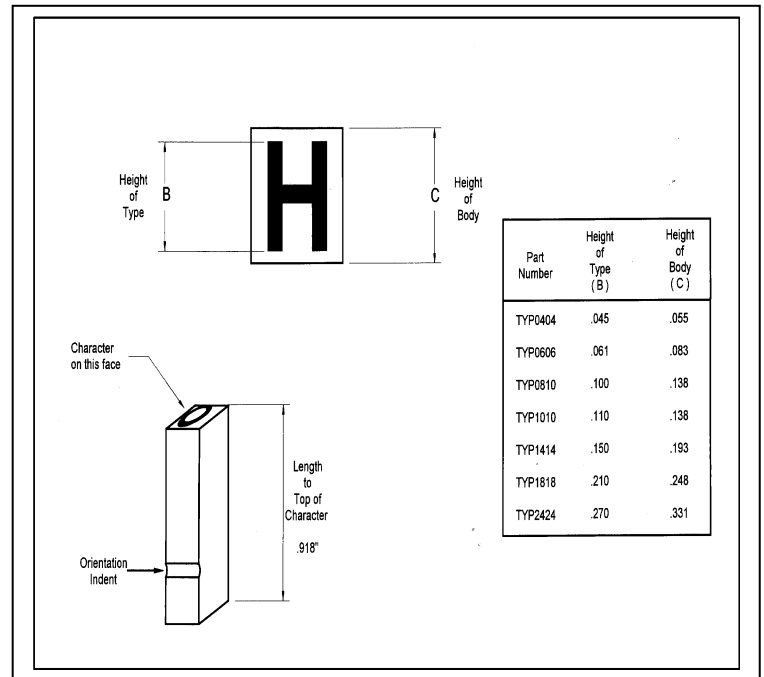
- 3 pieces of / \$ # % () = ± Ω
- 7 pieces of ? - ! . , &
- 9 pieces of 2 3 4 5 6 7 8 9

- 11 pieces of 1
- 13 pieces of 0
- 6 pieces of Q X Z
- 9 pieces of J K V
- 13 pieces of B W Y
- 15 pieces of F G
- 17 pieces of D H M P U
- 21 pieces of C L
- 32 pieces of A I N O R S T
- 39 pieces of E

Packages of replacement characters for any of the above fonts can be purchased. A package of 10 identical characters of any of the above is 10% of the font price. A package of assorted spacers for any body size is available. See accessories list below.

Custom Type, Dies, Stamps and Logos

We can produce custom type from brass and steel in many standard type faces to meet your specifications. Custom dies and blocks of type can be manufactured with logos or special characters in any type face from brass and magnesium in 4 point and larger type. Many standard logos and symbols are also available. Use your company's logo to identify your product. These custom logos and type can be made from almost any printed representation, copy or drawing. **Call factory for pricing and availability.**



ACCESSORIES and INKS

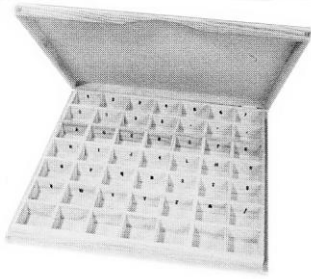
MM-WC	Case for Type (Wood)	\$ 85.00	CL500	Biodegradable Ink cleaner/remover	50.00
MM-SP4	Package of 4 Pt. Spacers	70.00	MM-RR	Rubber Roller with bearings.	85.00
MM-SP6	Package of 6 Pt. Spacers	65.00	MM-WR	Wrench for Chase Lock .	7.00
MM-SP10	Package of 10 Pt. Spacers	60.00	RT012B	Black Ink, 4 Fluid oz. Tube.	80.00
	for TYP0810 and TYP1010		RT012W	White Ink, 4 Fluid oz. Tube.	80.00
MM-SP14	Package of 14 Pt. Spacers	60.00	RT012C	Specify Color. See ink specifications.	95.00
MM-SP18	Package of 18 Pt. Spacers	60.00	HT175B	Black Ink, 4 Fluid oz. Tube.	80.00
MM-SP24	Package of 24 Pt. Spacers	60.00	HT175W	White Ink, 4 Fluid oz. Tube.	80.00
MM-MC	METAL Chase	66.00	HT175C	Specify Color. See ink specifications.	95.00
MM-LK	Chase Lock	21.00	MT260B	Black 2-Part Epoxy Ink, 8 Fluid oz.	140.00
MM-FLF	Full-Length Metal Furniture	65.00	MT260W	White 2-Part Epoxy Ink. 8 Fluid oz.	140.00
MM-HLF	Half-Length Metal Furniture	45.00	MT260C	Specify Color. See ink specifications.	200.00
MM-OTP	Offset Transfer Pad	55.00	MM-BR	Brayer	34.00

Minimum Order \$50.00. Prices effective march 1, 2016.

All prices subject to change without notice.

All products manufactured in U.S.A.

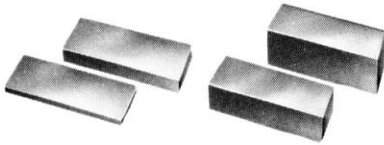
ALLEN AVIONICS, INC.



CASE FOR TYPE

This conveniently shaped wooden box expedites the selection of the offset type. The time saving alone is worth many times the cost of this inexpensive container. This 12" x 12" x 1 1/4" box is divided into 49 individually marked sections. A cover keeps type dust-free and prevents the type from mixing.

FURNITURE (Metal)

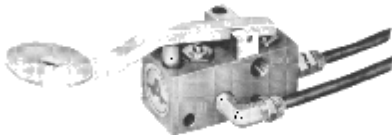


Used as spacers between lines. Available in two different lengths: **Full Length** – Approximately 4.3" long.
Half Length – Approximately 2.1" long.

A set of either of the above consists of:

- 1 pc. 1/2" (.500), 3 pcs. 1/3" (.333), 2 pcs. 1/6" (.167),
- 5 pcs. 55 mils (.055), 3 pcs. 25 mils (.025),
- 7 pcs. 15 mils (.015)

HAND VALVE KITS



- (H1HD)** Used on Model A3FT to add hand valve control. (Hand valve, hose and fittings.)
- (H2HD)** Used on Model A4AC to convert to Model A5AH. (Hand valve, hose, fittings, couplers and hardware.)

FOOT VALVE KITS

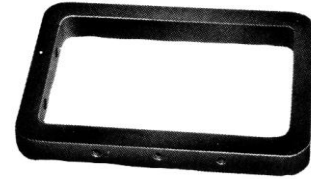


- (H3FT)** Used on Model A2HD to add foot valve control. (Foot valve, hose and fittings.)
- (H4FT)** Used on Model A4AC to convert to Model A6AF. (Foot valve, hose, fittings and hardware.)

AUTOMATIC KIT

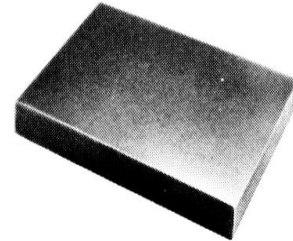
- (H5AC)** Used on Model A2HD or A3FT to convert to Model A5AH or A6AF. (2-way air valve, couplers and miscellaneous hardware.)

CHASE



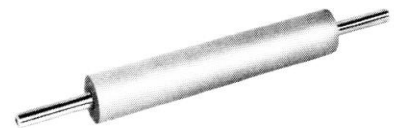
Fixture to hold type.

OFFSET TRANSFER PAD



4 1/2" x 3" x 1/2" synthetic rubber pad.

RUBBER ROLLERS



3/4" dia. x 5" long on arbor 1/4" dia. x 7 1/2" long.

LOCK



Used to secure type and furniture in proper position inside of chase.

WRENCH



Used to expand lock.

BRAYER



Hand roller used to spread ink over platen.

ALLEN AVIONICS, INC.