

10A/11A/20A SERIES

8 PIN DUAL-IN-LINE
TTL ACTIVE DELAY LINE

FEATURES

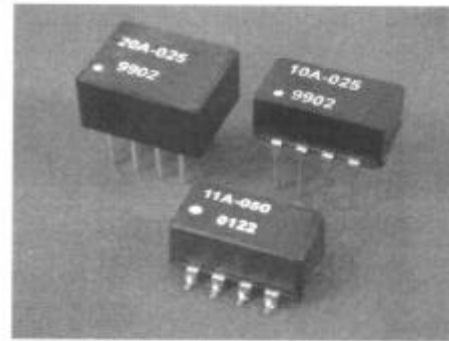
- 8-PIN PACKAGE.
- 5EQUALLY-SPACED TAPS.
- TTL SCHOTTKY INTERFACED.
- TOTAL DELAYS FROM 25-1000nS.

ELECTRICAL CHARACTERISTICS

I _{IH} LOGIC"1" INPUT CURRENT	:50UA MAX
I _{IL} LOGIC"0" INPUT CURRENT	:-2mA MAX
VOH LOGIC"1" OUTPUT VOLTAGE	:2.7V MIN
VOL LOGIC"0" OUTPUT VOLTAGE	:0.5V MAX
VIH LOGIC"1" INPUT VOLTAGE	:2.0V MIN
VIL LOGIC"0" INPUT VOLTAGE	:0.8V MAX
TA OPERATING TEMPERATURE	:0°C TO 70°C
NH FANOUT"1" OUTPUT	:20 TTL LOAD
NL FANOUT"0" OUTPUT	:10 TTL LOAD
SUPPLY CURRENT	:75mA TYP.

ELECTRICAL SPECIFICATIONS

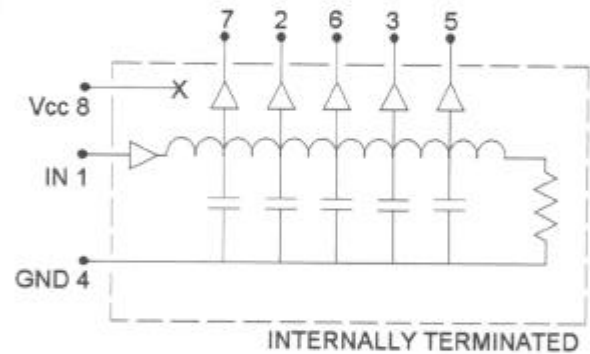
PART NO.	DELAY TIME T _d (nS)	TAP DELAY (nS)	RISE TIME Tr(nS)max
10A/11A/20A-025	25 ± 2	5 ± 2	4
10A/11A/20A-050	50 ± 5%	10 ± 2	4
10A/11A/20A-075	75 ± 5%	15 ± 2	4
10A/11A/20A-100	100 ± 5%	20 ± 2	4
10A/11A/20A-150	150 ± 5%	30 ± 2	4
10A/11A/20A-200	200 ± 5%	40 ± 2	4
10A/11A/20A-250	250 ± 5%	50 ± 5%	4
10A/11A/20A-300	300 ± 5%	60 ± 5%	4
10A/11A/20A-500	500 ± 5%	100 ± 5%	4
10A/11A/20A-1000	1000 ± 5%	200 ± 5%	4



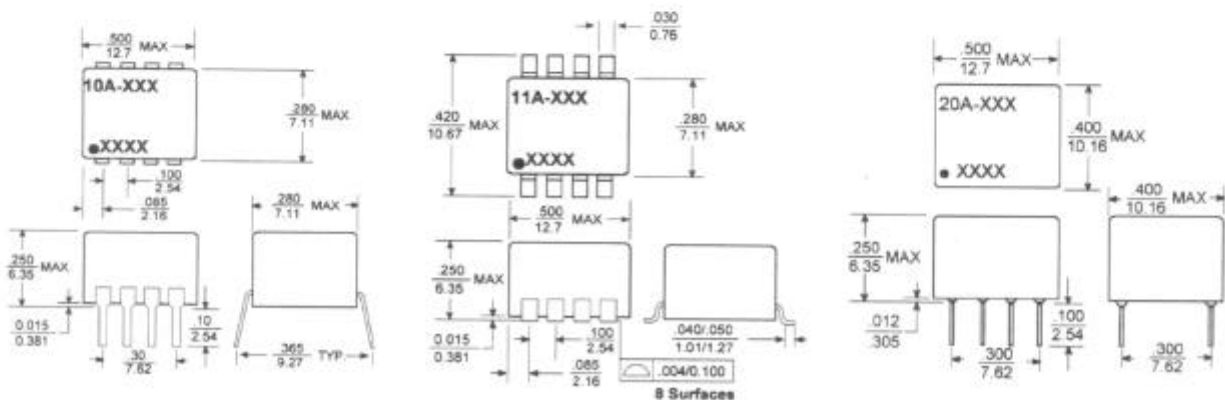
INPUT PULSE TEST CONDITION

PULSE VOLTAGE	:3.2V
PULSE WIDTH	:50NS MIN. OR 100%TD
DUTY CYCLE	:<50%
PULSE RISE TIME	:2NS(0.75 TO 2.4V)
TIME DELAY MEASURED	:@1.5V IECEL
SUPPLY VOLTAGE VCC	:5.0 ± 0.25VDC

PIN CONNECTIONS



MARKINGS AND DIMENSIONS



Dimensions: inches/mm Unless otherwise specified, all tolerances are ±.010/±0.25

ALLEN AVIONICS, INC.

224 East Second Street, Mineola, NY 11501 • Tel: (516) 248-8080 • Fax: (516) 747-6724 • www.allenavionics.com